



hallmarc

NATIONAL FITOUTS

Spaces built to be remembered



22+ years of delivering commercial, retail and hospitality with established and experienced team

Grounded in practical, hands-on knowledge, Marcus pairs his cabinet-making origins with 22+ years of building industry experience. He's constructed large end commercial projects as well as retail and hospitality fitouts to new homes and renovations and, as a foreman, kept major store builds on track for UK retailers including IKEA, Sainsbury's and Marks & Spencer.

In 2008 Marcus joined a leading shopfitting company as a partner and shareholder. In 2016, seeking to deliver fitouts with greater control, clearer communication and higher standards of accountability, he founded Hallmarc National Projects.

Hallmarc National Projects delivers fitouts to the highest standards and creates spaces customers want to keep coming back to. Sean O'Meara supports the business as a strategic adviser and hospitality specialist, bringing 22+ years of experience and a track record of launching over 3,700 venues.

-
- Trade Qualified Cabinet Maker / Shopfitter
 - Certificate III in Furnishing – Cabinet Making Stream
 - Diploma of Project Management

What sets us apart

“

At Hallmarc, we control quality end-to-end and provide turn-key solutions. Our in-house joinery workshop, disciplined project management and trusted trade network mean we deliver faster, cleaner and with the accountability our clients expect.

— Marcus Hall, Founder & Principal



Speed

Faster delivery without compromising quality



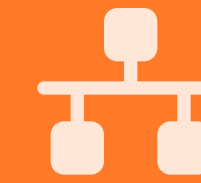
Quality

In-house joinery manufacturing ensuring control



Single Point of Contact

Simplified project management



Trusted Trade Network

Vetted partners across all trades from years of experience primarily across Australia and New Zealand

The team

Our experienced team manages every detail of your project from concept to completion. With decades of combined experience, we ensure seamless coordination across all trades and timely communication throughout your build.



Jade Hewett

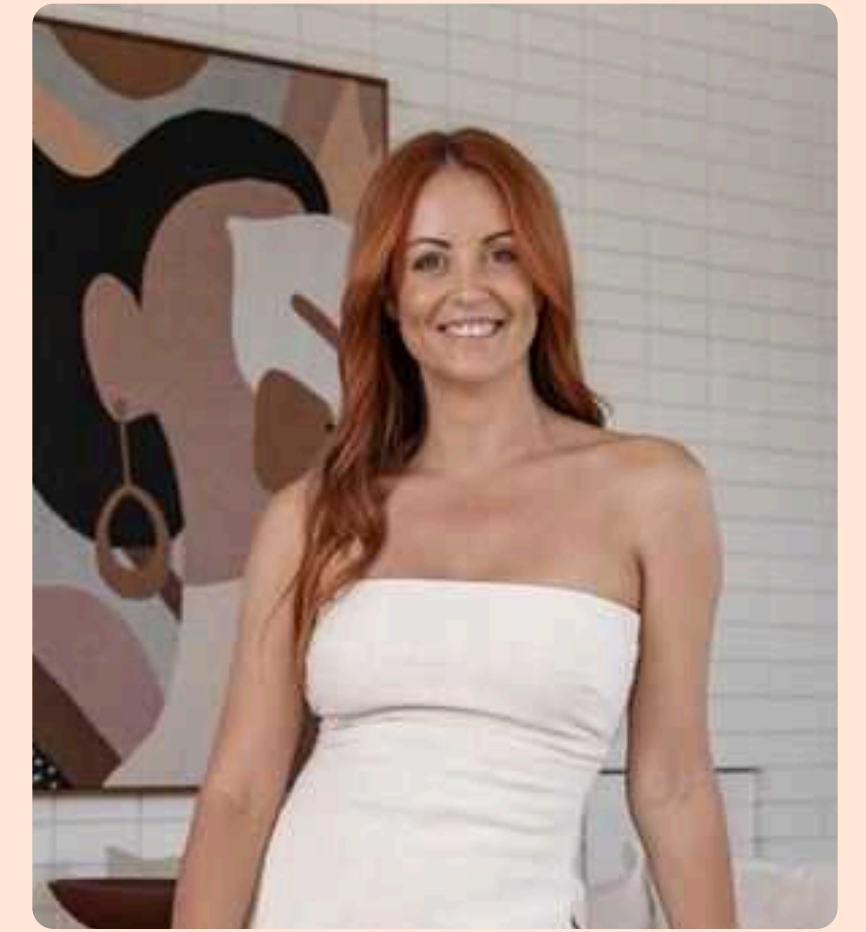
General Manager

Diploma project management & Cert 4 in building and construction certificate



Zoe Duncombe

Project Manager



Searah Scott

Project Coordinator



Carolyn Maroney

Accounts Manager



Jaz Vardey

Project Coordinator



Andy Farley

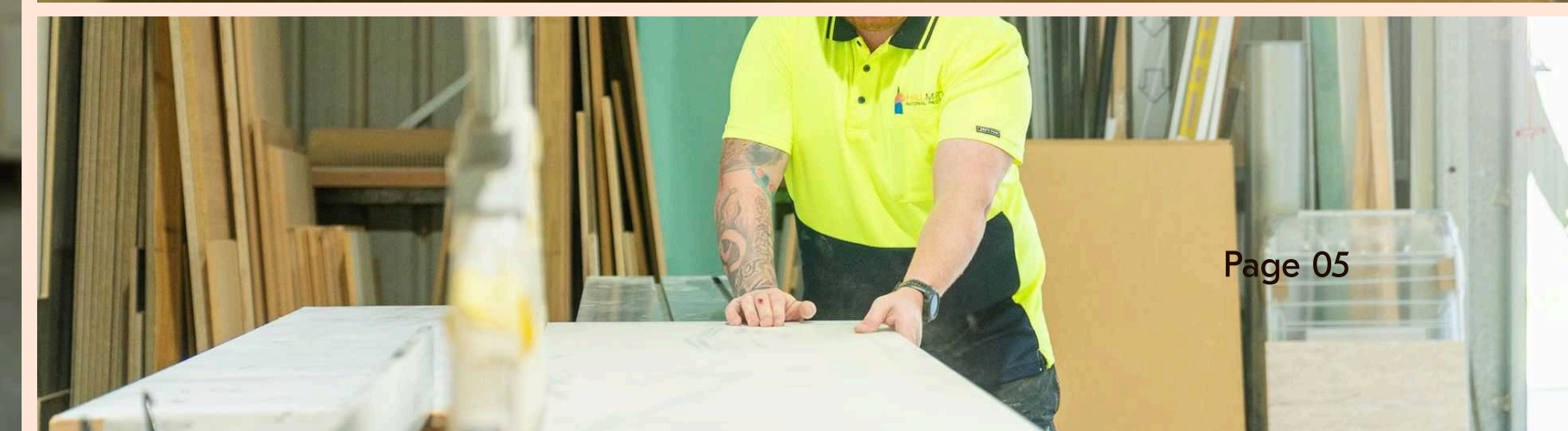
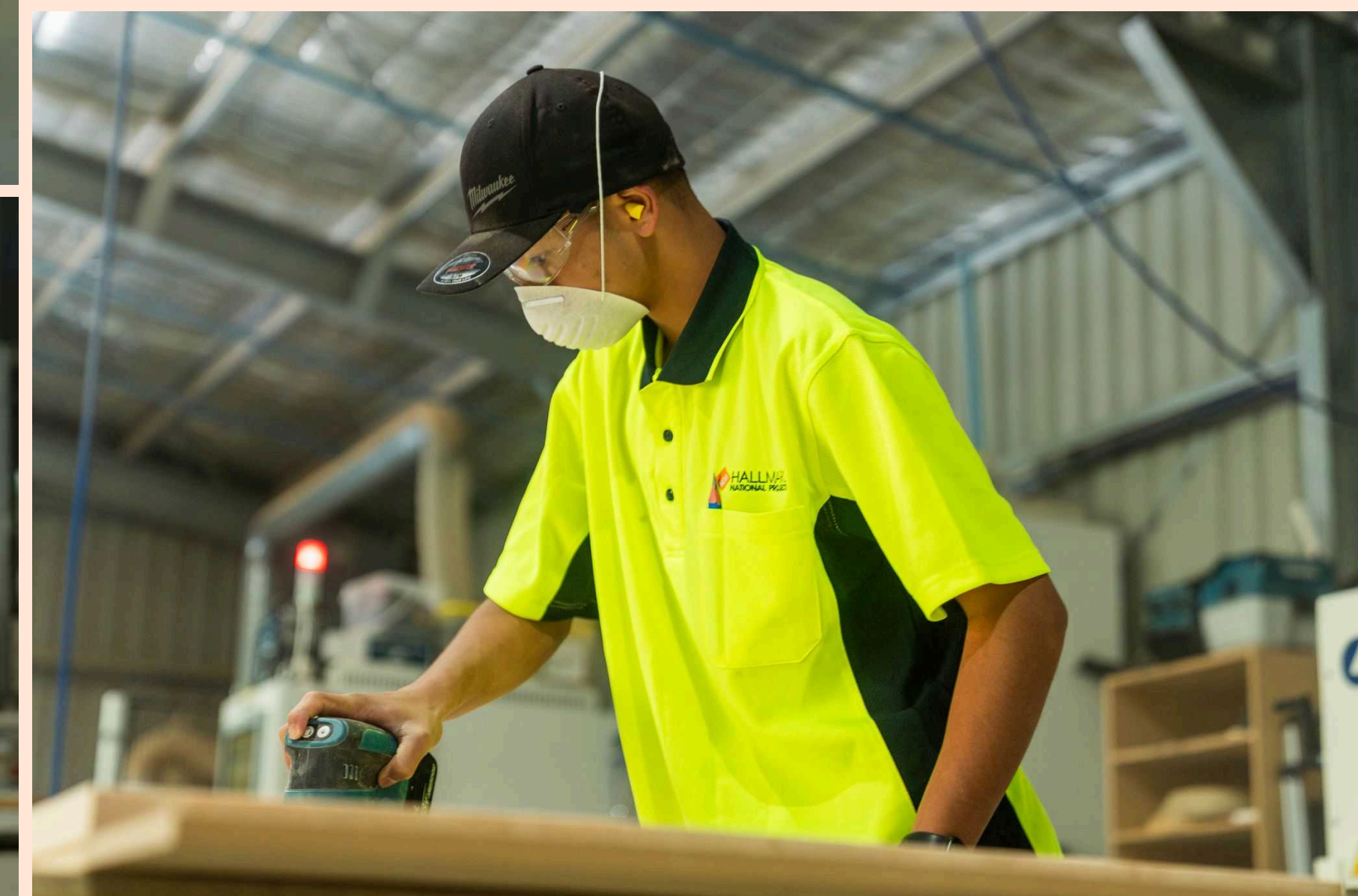
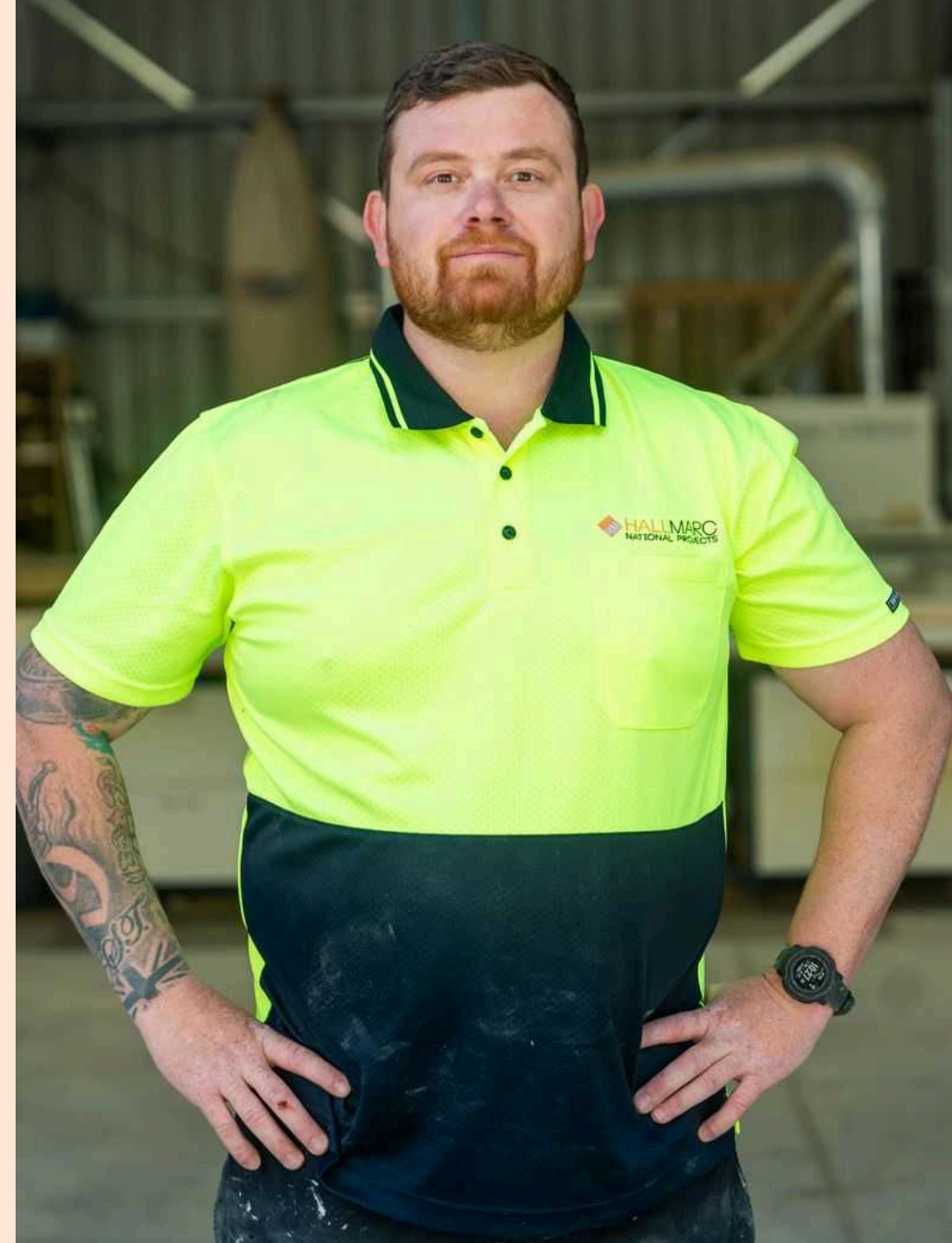
Project Manager

Our workshop & trade capability

Our in-house joinery workshop gives us complete control over quality, timelines, and custom solutions. Combined with our network of specialist trade partners, we deliver true turnkey capability.

Meet Paul Gooch

Paul is a skilled CNC operator and cabinet maker with a strong focus on precision assembly and quality control. He ensures every project is carefully assembled, thoroughly checked, and fully prepared for packing and logistics, guaranteeing it's ready for seamless on-site installation.



Full turnkey capability

We've worked with hundreds of companies and have our preferred suppliers for each trade to ensure service excellence and QA are to the highest standard at handover.



Joinery

Custom manufacturing,
our core strength



Electrical

Complete electrical fitout
services



Painting

Professional finishing



Plastering

Expert wall preparation
and finishing



Tiling

Floor and wall tiling
services



Plumbing

Full plumbing
installations



Concrete Cutting and coring



Structural design and certification



Planning and building permits



Project Management



Exhaust and Ventilation



Grease Traps



Hydraulics

National Fit Outs, licensed across Australia

End-to-end turnkey fitout management,
wherever you need us

- Local knowledge, national reach
- Proven interstate project delivery
- Consistent quality across all locations
- Single team managing multi-site rollouts

-
- ACT Shopfitting License #2017159
 - SA Shopfitting Licence #BLD308965
 - QLD QBCC Shopfitting License #1500598
 - VIC VBA Shopfitting License #CB-L 44664
 - WA Shopfitting License #BC104079



Industries we serve

We work across and manage end to end for large national QSR chains to high end fashion and IT retailers to restaurants, pub and hotel fitouts, we work across diverse industries and deliver exception quality and service



Retail

- Fashion & apparel
- Luxury retail
- Shopping centre and department stores
- Consumer Goods
- Technology enabled fitouts



Commercial

- Office & Workplace Fitouts
- Developer Display Suites
- Residential & Apartment Fitouts
- Health & Medical
- Education
- Mixed-Use Developments
- Government & Civic Buildings
- Corporate & Head Office Projects



Hospitality

- Restaurants
- Pubs and Clubs
- Hotels
- Wineries
- Bars
- Cafes
- QSRs



The Eveleigh

📍 Display Suite, Broadbeach

🔧 SCOPE

Project management, trade coordination, program management, delivery

🏗️ CHALLENGE

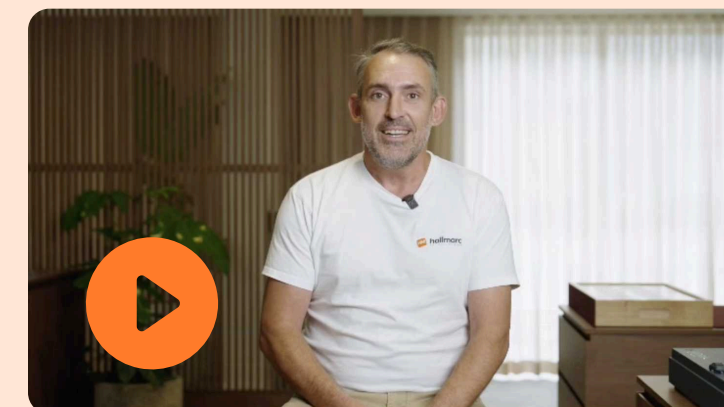
Deliver a complex commercial display environment within a fixed 4.5-week program, coordinating all trades and maintaining design integrity

💡 THE HALLMARC SOLUTION

Senior-led team managed trades, program constraints and the client's design vision within a fixed timeframe

✅ THE OUTCOME

Display suite delivered on time, on budget, and to the standard the developer required to launch to market



[Click here to watch Marcus talk about our Eveleigh project](#)



DISSH Boutiques

📍 Head Office - Level 28, George St, Brisbane

🔧 SCOPE

Project management, on-site supervision, off-site manufacture

🏗️ CHALLENGE

DISSH is a female-founded Australian fashion brand that's all about looking good and feeling good. They needed their 1000m2 new-build head office in Brisbane to reflect the brand's essence: sustainably minded, thoughtfully designed, and laidback style.

💡 THE HALLMARC SOLUTION

Working in accordance with architectural design and specifications, the Hallmarc team were able to seamlessly pivot to accommodate design changes. We re-quoted swiftly, secured council approvals, all while maintaining the project schedule. In fact, we delivered it two weeks early.

✅ THE OUTCOME

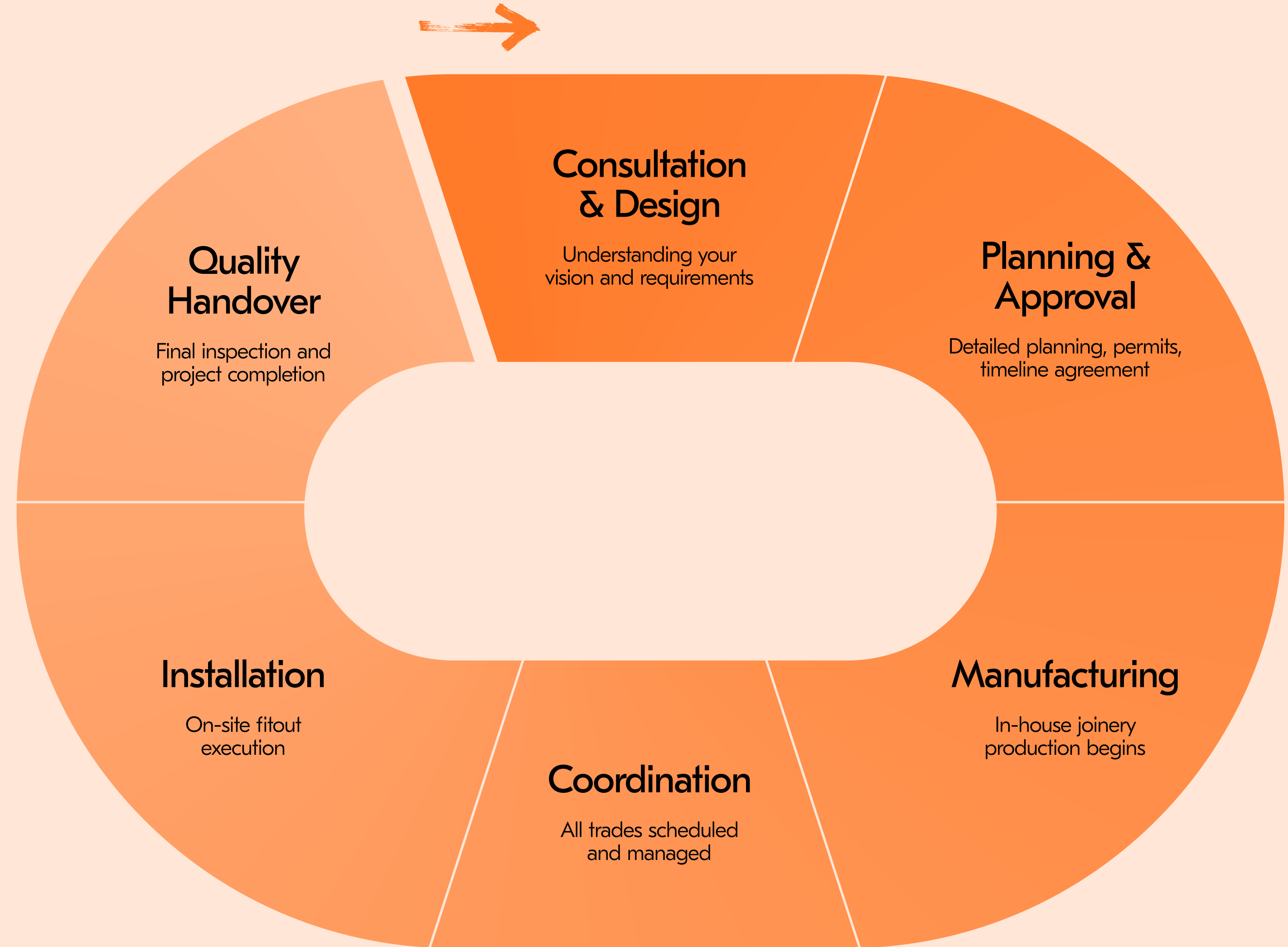
The end result is an immersive space brimming with light, texture and elegance. It's a space that makes employees want to stay (not rush out the door). And an environment where they feel inspired to do their best work.

Our process

Our process steps might seem pretty standard, but the service and spaces we deliver are extraordinary.

There are a few things we do differently. Our senior team keep you informed every step of the way. Our in-house joinery manufacturing boosts efficiency and innovation. Our maintenance service helps you keep your space looking its best from day 1 to day 1001 – and beyond. And while, personally, we may be easygoing, we take our profession seriously.

We're Cm3 certified and have a spotless track record when it comes to safety, with zero incidents on site in our ten years of operations. As are some of our recent accolades (Interior Design Excellence Awards, Deezeen Awards) for sustainably designed spaces. And we do it all with professionalism, an eye for detail, and a get-it-done attitude.



Why Hallmarc?

In-House Manufacturing & Turnkey Project Management

Joinery Control:

Our in-house workshop gives us complete control over quality, costs, and custom design solutions. Where needed we use existing relationships with quality joinery manufacturers across Australia.

Single Point of Contact:

We offer everything under one roof—from initial scoping and manufacturing to ongoing maintenance.

Trusted Trade Network:

We maintain longstanding ties with specialised trades (electrical, masons, plumbers, and artisans) to ensure premium finishes.

Senior-Led, Personal Service

Expert oversight:

You are guaranteed a senior team for the duration of your project and direct access to Managing Director Marcus Hall.

Solid Internal Team:

75% of our staff have been with us for five years or longer, ensuring deeply-embedded knowledge of your brand.

Calm Communication:

Clients highlight our ability to deliver information in a clear, concise, and calm manner, regardless of project complexity.

Speed to Action - transparent and timely communication

The record:

98% of our 650+ projects have been delivered on time.

The Impact:

Accelerates your return on investment by getting your doors open sooner.

Reliability

22+ years experience:

We know things don't go to plan and we work around small and large issues as they arise, we are solutions focused

Australia-wide network:

We've got a trusted trade network Australia wide

Stellar track record:


Proven multi-site rollout capability across retail, hospitality and QSRs.


Deep hospitality network:

Through Sean O'Meara, we bring access to an extensive hospitality network built over 22+ years and 3,700+ venue launches

Ready to deliver your next project faster, with less stress?

 hallmarcfitouts.com.au

 (07) 5571 5551

 Unit 2/2 Inventory Court
Arundel QLD 4214

 441 Little Bourke St,
Melbourne, 3000



Marcus Hall
Managing Director

Phone: 0406 129 744
Email: marcus@hallmarcfitouts.com.au



Jade Hewett
General Manager

Phone: 0431 711 080
Email: jade@hallmarcfitouts.com.au



Zoe Duncombe
Project Manager

Phone: (07) 5571 5551
Email: zoe@hallmarcfitouts.com.au